

Artback NT Annual Report 2014



ART
BACK
NT

PERFORMING ARTS | VISUAL ARTS | MUSIC | INDIGENOUS TRADITIONAL DANCE

Darwin Office:
56 Woods St | GPO Box 535
Darwin NT 0801
Phone: 61 8 8941 1444
Fax: 61 8 8941 1344

Alice Springs Office:
Cnr Bath St and Stott Tce | PO Box 4582
Alice Springs 0871
Phone: 61 8 8953 5941
Fax: 61 8 8952 6595

Borrooloola Office:
C/o Waralungku Arts Centre
Robinson Road Borrooloola NT 0854
Phone: 61 405 926 209
Fax: 61 8 8972 8986

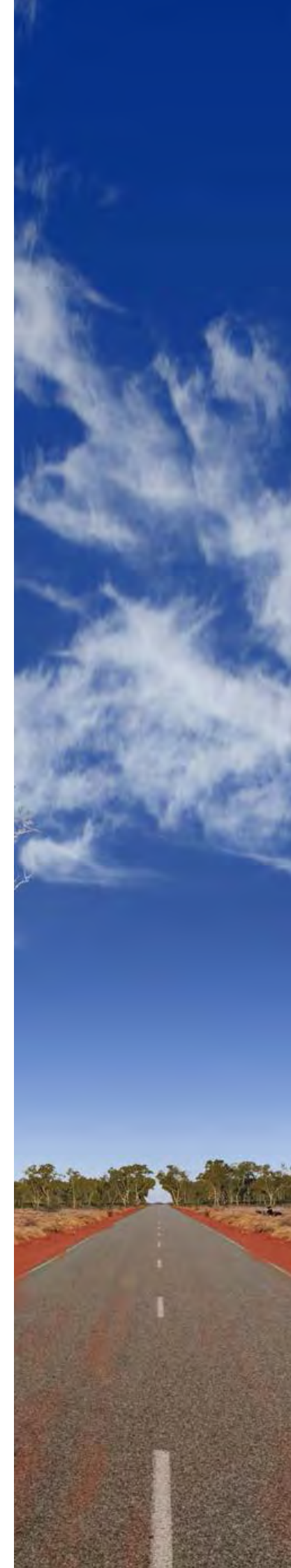
ABN: 72 598 610 340

[w] www.artbacknt.com.au



Contents

Chair's report	1
Treasurer's report	1
Executive Officer's report	2
Music	4
Performing Arts	7
Visual Arts	11
Indigenous Traditional Dance Program	14
Disability Action Plan	18
Reconciliation Action Plan	20
Northern Territory activity	23
National activity map	24
Financial report	25



BOARD

Chair
Vice Chair
Secretary and Treasurer
Public Officer
Committee Member
Committee Member
Committee Member
Committee Member
Committee Member

Juliette Hubbard	Darwin
John Oster	Alice Springs
Jenny Pender	Alice Springs
Gary Single	Darwin
Francine Chinn	Gapuwiyak
Kathryn Gray	Brisbane
Liam Campbell	Yuendumu
John Waight	Sydney
Denise Salvestro	Sydney

STAFF

Executive Officer
Performing Arts Touring Manager

Music Touring Manager
Visual Arts Development and Touring Manager

Visual Arts Touring Manager
Indigenous Traditional Dance Program Manager
Indigenous Traditional Dance Program Cultural Events Officer
Communications Manager

Anchor Tenant/Book-keeper

Louise Partos	Darwin
Angela O'Donnell/ Madge Fletcher	Darwin
Vanessa Hutchins	Darwin
Julie Fielke/ Alice Buscombe	Alice Springs
Neridah Stockley	Alice Springs
Lia Pa'apa'a	Borroloola
Marlene Timothy	Borroloola
Robyn McLean/ Jessica Ong	Darwin
Faye McAleenan	Darwin



ARTBACK NT

Artback NT is the Northern Territory’s visual and performing arts touring agency. The organisation works with individuals, groups and arts based organisations to present and tour a dynamic and exciting range of arts experiences across the Territory. The touring program is diverse, incorporates strong local content and reflects both Indigenous and non-Indigenous talent and expression.

Mission

Connecting people and place through arts development and touring.

Values

- We conduct our business with integrity and respect
- We are committed to creative excellence and capacity building
- We embrace the diverse environment of the Northern Territory
- We believe investment in arts and culture is fundamental to a rich life and the wellbeing of communities.

Outcomes

- Territory artists and the arts industry flourishes
- Territory communities and audiences access and produce arts and cultural experiences
- Territory arts and artists are celebrated locally and renowned nationally and internationally
- Artback NT is a strong and adventurous organisation

Artback NT acknowledges the Traditional Owners of Country to which we travel and on which we work.

ART BACK NT 2014



Chair's report

Once again we find ourselves at the end of another year filled with highlights and success. Firstly, let me congratulate the staff of Artback NT who have worked tirelessly to ensure Territory artists and works have had opportunities to grow and prosper locally and nationally. They have also laboured to bring world class acts to the Territory for our palates to savour and devour.

The Artback NT team has generously guided and supported the organisation's success, positioning it as a strong and informed voice in the arts landscape. As Chair, I want to acknowledge their consistent and dedicated approach to their work and thank them for their commitment to growing the organisation with passion and drive.

Their collective efforts in 2014 increased the economic participation of NT artists and arts workers who earned \$800,000 through contracts with Artback NT, of which \$300,000 was earned by remote Indigenous artists.

The Artback NT board has grown, further diversifying the skills, knowledge and expertise around our 'table'. I thank my fellow board members for their invaluable commitment, energy and outstanding humour and wit when undertaking board work. The last year has provided challenges that were met head on and handled with superb resolve to do the very best for the organisation. The board is currently working on a strategic plan that supports innovation, acknowledges and respects the fluidity of culture and understands the changing arts landscape.

Artback NT played instrumental roles in the success of NT artists in 2014. Special mention must be made of the Djuki Mala, Highway of Lost Hearts and Colours of the Country III national tours. Artback NT staff provided invaluable support, knowledge and expertise on these tours.

Our music touring and performing arts programs rolled out a canvas of soulful, funky tunes from Grace Barbe, Jacinta Price, Road Safety All Stars and more. Kudos to our touring program teams for ensuring diverse musical flavours were tasted in the NT and beyond.

The Indigenous Traditional Dance Program delivered an inspiring feast of dance in Borroloola. Artback NT staff instigated creative community development initiatives that were creative and culturally sustainable. 2014 saw the continuation of a community market in collaboration with Waralungku Art Centre, regular bush trips to country and activities to strengthen and support traditional dance narratives.

Not only has our physical footprint grown, so too has our social media outreach with a sleek communication strategy in the Twittersphere, Facebook land and website world. Our stories are now shared in real time around the globe, providing additional exposure for Artback NT and the artists we work with. We are sharing our experience, our way of 'doing', as we do it!

There are exciting times ahead! I'm personally looking forward to seeing *Punuku Tjukurpa*, works from the Maruku Arts archive, installed in thirteen sites across the country; a massive undertaking for all involved. This will be an awesome and inspiring visual treat.

The activities planned by Artback NT for 2015 promise to satiate the diverse appetites and curiosities for the arts across the country. I plan on sampling as many of the delights on offer as I can; I hope to see many of you there too!

Juliette Hubbard
Artback NT Chair

Treasurer's report

2014 has been one of extremes for Artback NT. The massively popular Djuki Mala tour brought in large sums of money through touring grants and exceptional box office, while providing employment for the dancers and crew for much of the year. Meanwhile, funding in other areas shrunk significantly, as experienced by the music touring program, which received only half its budgeted funding from the NT Government.

Total income for 2014 stood at over \$3.07 million, compared to the \$2.62 million of 2013 and \$2 million or below in previous years. This is testament to the hard work and vision of Artback NT staff to create and present a vast array of events that funding bodies want to support and audiences want to see. With this in mind, 2015 is a year of consolidation so we envisage income will revert closer to 2013 levels.

The Australia Council was particularly generous this year with great support for our regional visual and performing arts touring programs including the national *Punuku Tjukurpa*, Djuki Mala, Highway of Lost Hearts and Jacinta Price tours.

Careful budgeting has enabled a \$30,000 profit to be added to the reserves, which now stand at around \$184,000 ensuring ongoing stability for the organisation in uncertain times. All Northern Territory arts organisations were advised of ongoing reduced funding commencing in the 2015/2016 financial year. As a result Artback NT is doing its best to secure non-government funding and to reduce costs wherever possible to prepare for this.

Unfortunately sponsorship from outside sources is getting harder to come by, particularly with locally operating mining companies suffering from the downturn in global resource prices. A general reduction in arts funding from all levels of government also puts pressure on philanthropic organisations who need to prioritise and ration their grants. Although our reserves are steadily growing, income earned through interest has and will decline further due to record low bank interest rates on savings.

On the brighter side, leave entitlement liabilities have been managed well this year, with only a couple of staff needing to reduce some of their unspent hours during 2015. Long service leave provisions for staff approaching seven years have now been factored into the budget.

More money was spent on communications in 2014, with a new staff member focusing solely on this facet of the organisation. There has certainly been an expanded visibility of Artback NT activities online and in public forums and a greater acknowledgement of and attendance at events this year.

All in all 2014 has been a very successful, if not challenging, year for Artback NT and the forward planning shows some exiting new events for 2015, with some popular programs returning for further touring.

As always we would like to thank the Northern Territory and Federal Governments for their ongoing support of the arts and Artback NT particularly.

To our sponsors, donors and all others who give so freely of their time and money to assist in the great work of Artback NT—we couldn't do it without you!

Jenny Pender
Artback NT Treasurer

Executive Officer's Report

Artback NT continues to deliver an extraordinary arts development and touring program with a breadth of reach and delivery unparalleled amongst arts organisations throughout the country. The phenomenal success of the Djuki Mala tour on top of a year of outstanding achievements ensured that we significantly broadened our scope, established new partnerships and delivered an amazing program. We also significantly boosted our national reputation and achieved some incredible outcomes for NT artists. On the other hand, we overstretched our resources and are totally committed to a more sustainable 2015!

In 2014, the organisation achieved the following significant highlights:

- Delivered sixty-four performances of Djuki Mala across thirty-seven venues throughout five states and territories, offering us a significant opportunity to promote remote Indigenous artists and the NT performing arts sector to a national audience. An increase of 67% on estimated audiences reveals our success!
- Delivered our first international artist in residence program in Alice Springs with Akiq Abdul Wahid from Cemeti Art House, Yogyakarta.
- Delivered a wonderful DanceSite event in Borroloola over two nights celebrating the second year of our program there.
- Created the Road Safety All Stars where five Indigenous musicians representing different languages and communities of the NT wrote a road safety CD and video snap shots. As Indigenous community champions, they are at the forefront of delivery and advocacy for change in their communities.
- Produced the amazing *Mokuy* with Gary Lang NT Dance Company, which premiered at the Darwin Entertainment Centre as a highlight of the Garmalang Festival.
- Delivered a national strategic initiative with our audio descriptions and training for participants across the NT to increase access and offer a more comprehensive experience of visual arts exhibitions.
- Presented two highly successful visual arts exhibitions at the Chan Contemporary Art Space (*Colours of the Country III* - Alice Springs Beanie Festival and *Border v2.0* - Akiq AW).
- Delivered Jacinta Price and her NT band's first tour throughout the NT and WA.
- The revamped website was launched, our Facebook likes have doubled and Artback NT's new Twitter and Instagram accounts have further broadened our digital footprint.
- Mary Anne Butler's moving work, *Highway of Lost Hearts*, had audiences around the country sharing laughter and tears with her. The road trip this tour took across four states and two territories even mirrored some of the locations visited in the actual play.
- Received funding for *Punuku Tjukurpa*, the first touring exhibition of artworks from the Maruku Arts archive based at Mutitjulu, near Uluru in the Northern Territory.
- Obtained funding for training and work placements for Marlene Timothy which have led to work offers and a range of opportunities for her to explore in 2015.
- Tjintu Desert Band rocked out at the Woodford Folk Festival in Queensland

- Toured Fred Smith's *Dust of Uruzgan* throughout the Territory
- Delivered the Playing Australia funded performing arts tours, Grace Barbé—*Afro Sound of the Seychelles* throughout the Territory, as well as *Gift of Life* funded by the Organ and Tissue Authority
- Partnered with the Waralungku Art Centre to establish monthly community markets in Borroloola during the dry season.

Without good partnerships, touring would be made more difficult. Artback NT would like to acknowledge its major funding bodies:

- Department of Arts and Museums, Northern Territory Government
- Australia Council for the Arts

2014 saw significantly increased income, much of it due to the Djuki Mala tour, though in addition, new funding areas were sourced. This diversity is essential for the organisation's financial sustainability and longer term growth. Sponsorship and donations are a key focus and there was a small but significant increase in this income.

With offices in Borroloola, Alice Springs and Darwin, Artback NT provides representation, advocacy and promotion for NT artists throughout the Territory. The organisation also focuses on key industry networking events and touring forums, which offer an excellent opportunity for Artback NT to consolidate relationships, promote NT artists, raise issues and strengthen touring networks and partnerships. Throughout 2014 the following opportunities occurred:

- Artback NT lobbied successfully to host the National Exhibitions Touring Support (NETS) national meeting in Darwin 7-8 August 2014. This realised a significant opportunity for Darwin, as the host city, to showcase its arts, venues and vibrancy to the rest of the nation. Most importantly it also showcased an extraordinary visual arts weekend to the national sector, many of whom had not previously visited Darwin at this time. The meeting and activities were managed by Louise Partos and Alice Buscombe and NETS representatives were also able to attend the opening of Artback NT's exhibition *Colours of the Country III*.
- The national Performing Arts Touring Alliance (PATA) continued to meet and our Performing Arts Manager, Angela O'Donnell, represented the touring interests of the sector in the NT. The Blue Heeler Network has also continued and adapted over the past twelve months and the NT has remained an important part of this evolving story.
- Our Music Touring Manager, Vanessa Hutchins, participated as a professional mentor with Alice Springs musicians at the In Tune Youth Forum in Alice Springs. This included live feedback sessions with other guest mentors Mick Harvey and Anna Lavery as well as delivering a specific touring panel discussion.
- Vanessa also participated in a Remote Touring panel at the Australasian World Music Expo (AWME) in Melbourne, as well as conducted workshops for musicians wanting to apply to the Australia Council's Music Board for Contemporary Music Touring grants.
- Lia Pa'apa'a and Marlene Timothy attended the Australian Performing Arts Market (APAM) in Brisbane as well as brokered relationships with *Clancestry*, a key traditional dance event in Brisbane.

Artback NT is always looking for ways to improve the services we deliver. Feedback forms are supplied to every venue for our visual arts exhibitions and evaluation forms and debriefs occur with artists and crew after each tour/production. In addition, the organisation focused on three key pieces of research in 2014.

- A recce was made in regards to music venues between Darwin and Broome. Vanessa met with new potential presenters for the 2015 season, as well as touching base with existing venues as she personally sought feedback and updates regarding presenter abilities and needs.
- The Music Touring Program was independently evaluated from an artist, presenter, production and sector perspective.
- Lastly, a specific review of the Performing Arts Touring Program was made. This was supported by the Tim Fairfax Family Foundation and has been used to inform the development and ongoing sustainability of the Performing Arts Touring Program.

The data gathered from the evaluations has already fed into future applications, tour itineraries and to a significant shift in organisational direction. As part of the strategic planning and evaluation process, it was agreed the program's focus would now be on developing the NT theatre and dance sector through producing, commissioning, touring and other forms of distribution of NT work. To achieve this we will grow partnerships with venues, philanthropic organisations and other resource providers to strengthen the local sector and create more opportunity for local artists. This shift will assist in developing new work that continues to nurture audience and artist development in the NT.

The other significant change in the program was the resignation of Angela O'Donnell who had been with Artback NT for just under six years.

Artback NT delivered another exciting and innovative visual and performing arts touring program in 2014 which is outlined within the report. None of this could have been achieved without the extremely hard work of all staff: Angela O'Donnell, Vanessa Hutchins, Neridah Stockley, Julie Fielke, Alice Buscombe, Lia Pa'apa'a, Marlene Timothy, Faye McAleenan, Robyn McLean and Jessica Ong. The organisation was also fortunate to employ some wonderful contractors who supported us this year including Kieren Sanderson, Tracey Bunn and Josh Grant. Finally, we were delighted to have the services of a wonderful intern Eve Pawlik who also made an extraordinary contribution.

I would again like to acknowledge all the communities and individuals who have invited us into their neighbourhoods and worked with us in order to develop audiences and ensure a positive and meaningful experience. Thank you for your assistance and good will.

I would also like to sincerely acknowledge the hard work of the Artback NT Board members and I certainly appreciate the time and effort you have given to the organisation. In particular the investment by the board and staff in the three day strategic planning workshop at Mary River. This was a significant commitment to the organisation and reflects the awareness of the changing funding environment and a willingness to embrace new ideas and directions in order to consolidate and strengthen our future. The strategic planning meeting brought us all together and I believe we now share a much greater understanding and acknowledgement of who we are, what we do, where we are going and why we all work so hard and believe in this amazing organisation!

Thank you again to both the staff and the board for your guidance and support.

Louise Partos, January 2015



Lost City - Kings Canyon, Linda Joy - 2014 Emerging Artist in Residence. Ink and wash on stonehenge, 50 X 76 cm

MUSIC

The Music Touring Program is now in its fourth year as a specialised Arts NT/Artback NT initiative that aims to:

- stimulate music touring pathways
- develop bands for touring outcomes
- help Indigenous bands to become tour ready and
- assist with touring support applications.

Working closely with Music NT and sector partners such as CAAMA Music, the Music Touring Program supported emerging artists and furthered touring outcomes for more established bands.

Road Safety All Stars

Developed from an existing relationship with the Road Safety branch of the Department of Transport, the Road Safety All Stars project saw the coming together of five Indigenous Road Safety ambassadors, who used music and video messaging to highlight the importance of taking care on the road. An eleven track CD, two film clips and eleven video safety messages were delivered as part of the project. A small pilot tour coincided with Merrepen Festival in Daly River.

Tour:	29 May - 1 June	Launch:	3 April
Venues:	4	Audience:	303

Funded and supported by the Department of Transport – Road Safety.

Photographer: Tim Parish

Katie Harder and the Artful Dodgers

Katie Harder and the Artful Dodgers toured to Territory venues from the Darwin Railway Club to Timber Creek Hotel. These opportunities resulted in dynamic performances that comfortably accommodated varied audiences. Well received by the local Indigenous audience in Yarralin, Katie Harder and the Artful Dodgers stayed three days in the community to deliver music development workshops.

Tour:	4 - 13 April	Workshops:	2
Venues:	6	Audience:	582

Photographer: Oliver Eclipse

Jacinta Price

Jacinta Price, supported by Colin Lillie, performed at eleven venues from Darwin to Broome, including hotels in Timber Creek and Kununurra and major events like the Derby Boab Festival. In partnership with CAAMA Music, a trainee sound engineer was able to join the tour and work on each concert to build capacity and knowledge.

Tour:	25 June - 9 July		
Venues:	9	Audience:	761

Funded and supported by the Australia Council for the Arts Contemporary Music Touring Program.

Photographer: Mathew McHugh

Tjintu Desert Band

Tjintu Desert Band replaced the originally scheduled East Journey at the Barkly Aboriginal Music Festival, part of the Desert Harmony Festival. They delivered workshops to students at Tennant Creek High School and acted as mentors to bands also performing at BAMFEST.

Tour:	28 -31 August	Workshops:	2
Venues:	1	Audience:	405

Funded and supported by Regional Arts Australia.

Tjintu Desert Band also delivered six stellar performances at Woodford Folk Festival. Their energy and commitment assisted in building a presence among new and old fans, which was enhanced by signings and meet-and-greets.

Tour:	26 December 2014 - 3 January 2015		
Venues:	1	Audience:	1530

Photographer: Oliver Eclipse

Band Night at DanceSite Borroloola

Band Night at DanceSite Borroloola was delivered on the first of two nights celebrating Indigenous traditional dance. Identified as an opportunity to provide concert support and explore music development possibilities, Band Night was headlined by Yilala Band and featured two local bands, Perfect Cult and Sandridge Band, as well as solo performer, Keenan Keighran.

Date:	18 July	Venues:	1	Audience:	600
-------	---------	---------	---	-----------	-----

Left: Warrick Jones from Sandridge Band. Photographer: Benjamin Warlungundu Bayliss



MUSIC

Artback NT's Music Touring Program was active in the development of the sector. The program

- provided professional mentorship across three days of activities to musicians in Alice Springs
- participated in a remote touring panel at the Australasian Worldwide Music Expo (AWME). This resulted in future tour bookings for Tjintu Desert Band in Canada
- facilitated workshops with local musicians in Darwin and Alice Springs about the Australia Council's Contemporary Music Touring Program. These included:
 - o grant writing tips
 - o marketing materials and
 - o how to successfully promote work.

All music tours were funded and supported by Arts NT and the Australia Council for the Arts through their Music Board.



Red Flag Dancers with Yilala Band, Band Night at DanceSite Borroloola. Photographer: Benjamin WarIngundu Bayliss

PERFORMING ARTS

Artback NT's Performing Arts Program significantly increased the profile of Territory artists, building capacity for these artists and building audiences for their work throughout the country.

The program supported artists and audiences from very remote locations as well as those from our bigger regional cities. We employed and supported over fifteen new tour managers and crew and developed artists in their work outside touring—including through national fellowships.



Darren Edwards and Cathy Young performing in *Mokuy*. Photographer: Glenn Campbell



Djuki Mala (The Chooky Dancers)

Beginning with visits to Galiwin'ku on Elcho Island in late 2013 and culminating in an extensive national tour throughout 2014, Djuki Mala transformed audiences, spread a great deal of joy and represented Yolngu culture with enormous pride.

Tour: February - September
Venues: 44
Workshops: 4
Audience: 29,634

Dancers: Lionel Dulmanawy Garawirtja
Wakara Gondarra
Baykali Ganambarr
Mitchell Rang Garawirtja
Aaron Djimilkinya Garawurra
Simon Bapadjambang Atu

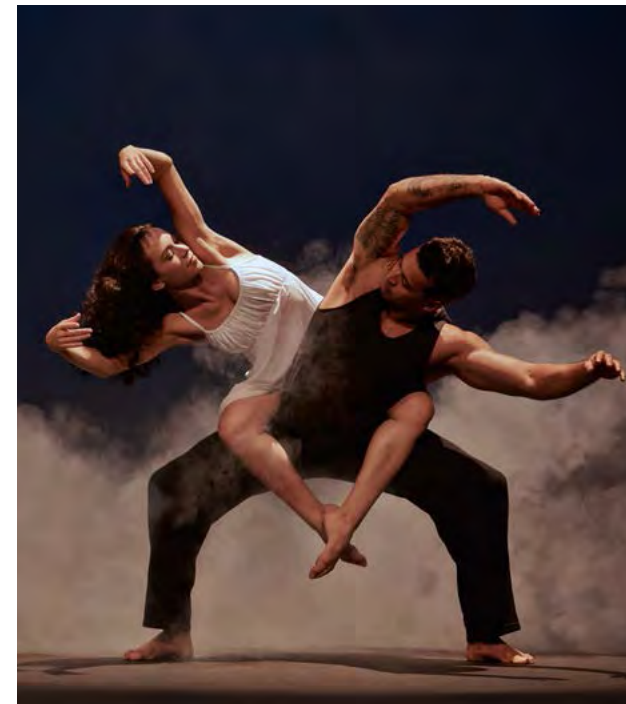
Djuki 'mum'
Producer/director: Josh Bond
Choreography: Nikki Ashby
Filmmaker: Naina Sen
Tour managers: Rosealee Pearson
Bec Cooen
Scott Large
Duane Preston

Funded and supported by Playing Australia, Tim Fairfax Family Foundation, and the Northern Territory Government.

Photographer: Sean Young

*#DjukiMala was unbelievable!
A masterpiece of storytelling and dancing talent #purejoy #chookydancers
– tweeted by @lotuslea*

Performing Arts Touring Manager Angela O'Donnell spent three months of 2014 on a Churchill Fellowship connecting the NT with places around the globe including Columbia, UK, Brussels, Turkey and Lebanon.



Mokuy

Gary Lang NT Dance Company

Premiering at the Garmalang Festival, *Mokuy* (spirit) follows the soul's journey after death, using dance to express the emotional complexities of mourning, healing and elation.

Tour: 9 - 10 May
Venues: 2

Dancers: Darren Edwards
Michelle Dott
Kyle Ramboyong

Performer
Artistic director/choreographer
Project manager
Dance dramaturg/rehearsal director
Production manager
Filmmaker
Lighting designer
Sound designer

Audience: 2294

Cathy Young
Bryn Wackett
Hans Ah Wang
Ellen Hankin
Gary Lang
Kieren Sanderson
Jessica Deveraux
Kelly Blumberg
Naina Sen
Vanessa Hutchins
Matt Cunliffe

Funded and supported by Australia Council for the Arts, Tim Fairfax Family Foundation and the Northern Territory Government.

Photographer: Glenn Campbell

Dust of Uruzgan

Fred Smith

Fred is an Australian Diplomat and was one of the first to be sent to Uruzgan Province in Afghanistan. As a musician and a humanitarian, Fred's first mission and subsequent return visits to Uruzgan Province had a profound impact, resulting in an album and show based on his experiences.

Tour: 14 - 24 May
Venues: 10
Workshops: 6
Audience: 581

Funded and supported by Tim Fairfax Family Foundation and the Northern Territory Government

Photographer: Geoffrey Dunn

I came here with my wife (who came last night as well) and very glad that I did. The performance was amazing, every Australian needs to see it.

- Tom Pauling, Darwin

Highway of Lost Hearts

Mary Anne Butler

A woman. A dog. A campervan. 4500 kilometres of wide open road. This moving work from Darwin based playwright and performer, Mary Anne Butler, had audiences around the country pondering the question – when your heart goes missing, what lengths will you go to in order to find it again?

Tour: July - September
Venues: 26
Workshops: 6
Audience: 2717

Funded and supported by Australia Council for the Arts, Tim Fairfax Family Foundation, the Northern Territory Government, Playing Australia and Brown's Mart Theatre

Photographer: Brett Boardman

*...an excellent reminder of how good Australian theatre can be...real and heartfelt.
– Frank McCone, Canberra Critics Circle*

Grace got everyone up dancing.... [she] also did a live presentation on Creole Cuisine; it wasn't the usual workshop concept but it was good - it gave everyone an opportunity to interact less formally before the show, it was a really nice way to introduce her.

- Kathy Burns, Artistic Director, Barkly Regional Arts, Tennant Creek NT



Afro Sound of the Seychelles Grace Barbé and Band

Afro Sound of the Seychelles saw Grace Barbé and her band of exceptional musicians win the NT over. Stella Savy, James Searle, Joelle Barbé and Daniel Carroll eased effortlessly into the NT and provided great joy for audience members throughout.

Tour: 20 - 26 August
Workshops: 1
Venues: 4
Audience: 355

Funded and supported by the Australia Council for the Arts, Tim Fairfax Family Foundation and the Northern Territory Government.

Photograph courtesy of the artist



Gift of Life

Gift of Life enjoyed its third year of touring in 2014, this time making it across to WA where it reached significant audiences and allowed a new partnership with Donate Life WA in order to engage with their communities.

Tour: 5 - 26 September
Venues: 21
Audience: 1475

Funded and supported by Organ and Tissue Authority, Donate Life and the Northern Territory Government.

Photographer: Tim Terry
Image courtesy of the Royal Darwin Hospital

This year the Performing Arts Program continued to develop new work and to invest in artists.

The program

- supported Gary Lang, the first NT artist to be given an Australia Council Dance Board Fellowship
- developed international relationships and connections through Angela O'Donnell's Churchill Fellowship
- worked on developing the Djuki Mala show in Galiwin'ku on Elcho Island in Arnhem Land
- produced the new work Mokuy by Gary Lang NT Dance Company.

PERFORMING ARTS 2014



The Performing Arts Program delivered 142 performances and workshops to over 36,900 audience members throughout the NT and almost every state in Australia.

VISUAL ARTS

Artback NT's Visual Arts Program focused on the delivery of artist in residence programs as well as project development, national exhibition touring and audio descriptive training. A significant aspect of the Visual Arts Program has been project planning for *Punuku Tjukurpa*, an exhibition launching in early 2015.



Lisa Waller, I'm your fan (detail), wool, felt and wire, 2011.
Image courtesy of the Alice Springs Beanie Festival.

Colours of the Country III: Alice Springs Beanie Festival

This colourful exhibition encapsulates the whimsical, imaginative essence of the Beanie Festival and also highlights the works produced by Indigenous artists from the central desert region who are regular contributors to this cross-cultural event.

Tour: August 2014 - August 2017 Workshops: 1
Venues: 3 Audience: 4140

Funded and supported by the Australia Council for the Arts, the Northern Territory Government, Arts Access Australia and the Alice Springs Beanie Festival.

Julie Brennan, *Gropmund G Groper*, wet and needle felted wool, machine stitching, 2013. Image courtesy of the Alice Springs Beanie Festival.

Kerjasama: Collaborate Akiq AW and Reko Rennie

Kerjasama, or 'Collaborate', is a reciprocal visual arts residency between Indigenous Australian and Indonesian artists. This program was launched in 2014 through Asialink's Arts Residency Laboratory, with Artback NT and Cemeti Art House coming together to deliver the program. In 2014, artists Akiq AW and Reko Rennie participated in the program for a combined total of twenty-four weeks.

Funded and supported by Asialink, Cemeti Art House, The Department of Foreign Affairs and Trade, Charles Darwin University, Watch This Space, Alice Springs Town Council, Australia Council for the Arts and the Northern Territory Government.

Akiq AW, *Parking Lot*, digital image, 2014.

Akiq AW: Border Watch This Space, Alice Springs NT

Akiq presented a series of 30x30cm colour photographs taken during his residency in Alice Springs, mostly featuring quirky and everyday moments and objects around the town centre. There was also a video projection work included in this exhibition.

Exhibition dates: 6 - 21 June Public programs: 4
Audience: 163

Akiq AW: Border v2.0 Chan Contemporary Artspace, Darwin NT

Border v2.0 showcased video and photography work by Indonesian artist, Akiq AW and collaborating artists Yudha Kusama, Andri William and Aim Adinegara. This exhibition explored the notion of borders, examining where they exist in everyday life – private from public, rural to urban, us from them, necessary to disposable, lawful from criminal. Several public programs were delivered in conjunction with the exhibition.

Exhibition dates: 24 October - 16 November
Audience: 649 Public programs: 4

Linda Joy: Alice Rocks Charles Darwin University Library Foyer, Alice Springs NT

A stunning and extensive display of images produced during Joy's residency were exhibited in Alice Springs. These were large scale drawings and watercolours on paper and featured landscapes of the Central Australian region.

Exhibition dates: 6-21 November Workshops: 1
Audience: 34



Emerging Artist in Residence Linda Joy

Linda Joy is a Darwin based arts educator and practicing visual artist and was Artback NT's inaugural NT Emerging Artist in Residence. Dedicated studio time allowed Linda to create a body of work that was exhibited in early November. Open studio opportunities enabled locals to visit Linda in her workspace and see works in progress.

Funded and supported by the Northern Territory Government, Alice Springs Town Council, CDU, Araluen Art Centre, Brian Tucker Accounting and Australia Council for the Arts.

Linda Joy, *Wurre (Rainbow Valley)*, ink and wash on Archers, 560x760mm, 2014. Image courtesy of the artist.

VISUAL ARTS

Punuku Tjukurpa

Punuku Tjukurpa is the first touring exhibition of artworks from the Maruku Arts archive, based at Mutitjulu, near Uluru in the Northern Territory. This exhibition opens at the South Australian Museum in Adelaide in March 2015 and will tour to a further twelve regional and metropolitan venues across five states and two territories until 2018. The exhibition will conclude its tour at the Araluen Arts Centre in Alice Springs.

With pieces taken from the Maruku Arts archive, a collection set up in 1984 and now comprising of over 400 works, this exhibition includes eighty-eight punu works, both sculptural pieces and walka boards. Also included are audio and video pieces produced especially for *Punuku Tjukurpa*. Special public programs with artists from the Pitjantjatjara Lands will take place, supported by Kathy Tozer, Maruku Arts worker and interpreter. The group will travel from Mutitjulu to five venues to share their knowledge and conduct workshops.

Audio descriptions delivered via MP3 are available at this exhibition for those who are visually impaired.

Funded and supported by the Australia Council for the Arts, the Northern Territory Government, Regional Arts Fund, Community Benefit Fund, Artlab and Arts SA, Grace Bros Fine Art Maruku Arts, Desert Vision and Nomad Art.

Ivy Ingkatji, *Piti*, c.1995. Itara (river red gum), 710mm x 290mm x 195mm.

North and South Marina Strocchi: 1995 – 2015

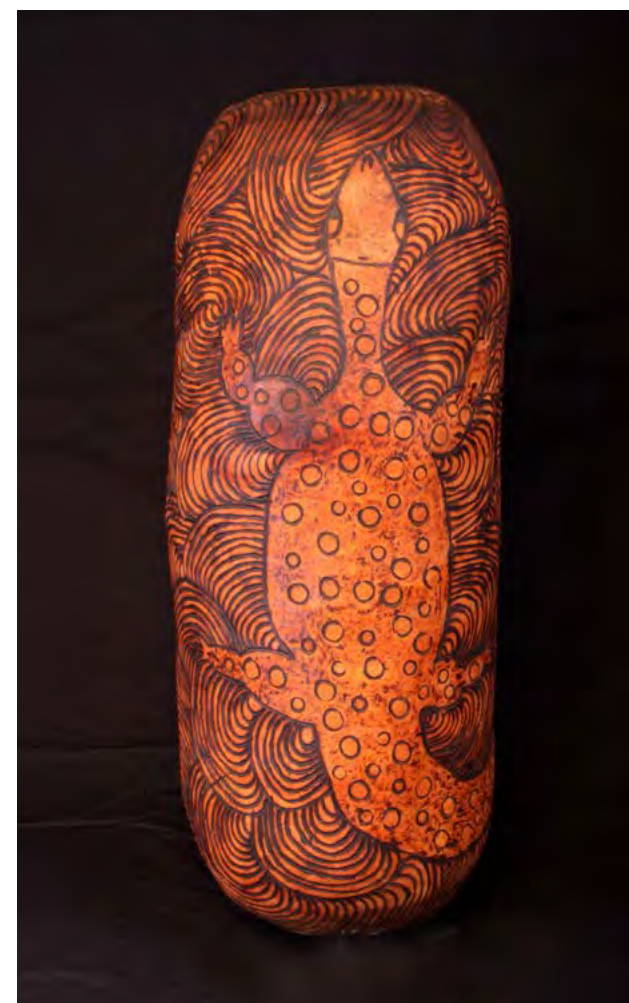
A mid-career survey show of paintings and works on paper by Marina Strocchi, an Alice Springs-based visual artist whose work has been widely exhibited throughout Australia and in the USA, *North and South* has a strong narrative structure relating directly to the topography of the Northern Territory. Starting with the tangled mangroves of Darwin Harbour, Strocchi traces iconic creatures and plants on a journey familiar to many Australians - from the water buffalo and jabiru of the Top End to the mulga and feral cats of the desert.

The exhibition represents Strocchi's twenty-two year career, ranging from the early Central Australian landscapes of specific sites to schematic and abstract reductions of natural and introduced elements of the environment. It encompasses small scale gouaches and oils, etchings, lithographs and monumental acrylic paintings, illustrating the trajectory of Strocchi's artistic practice from figurative narratives to the most recent conceptual abstractions.

In 2015, this exhibition will tour across the Northern Territory to GYRACC, Katherine and Nyinkka Nyunyu, Tennant Creek.

Funded and supported by the Australia Council for the Arts and the Northern Territory Government.

Marina Stocchi, *Truck Stop*, 2004, acrylic on linen, 175 x 200 cm.



VISUAL ARTS 2014



ITDP

Artback NT's Indigenous Traditional Dance Program (ITDP) continued to grow and develop its engagement with the community of Borroloola and the region, with the team identifying activities and programs that enhance the community's skills and capacity. In 2014 there was a greater emphasis on working locally as opposed to touring.



INDIGENOUS TRADITIONAL DANCE PROGRAM

DanceSite Borroloola

DanceSite Borroloola was staged at the showgrounds in July, presenting over 120 traditional Indigenous performers from across the Gulf Region to an audience of over 1000 people. DanceSite Borroloola had many successful layers; as a result of the solid foundation established over the past fifteen months delivering the program, new community members were engaged and over 120 Borroloola residents benefited from employment opportunities.

Red Flag Dancers were the headline act. Originally from Numbulwar, the group, who have family and cultural connections with Borroloola, was engaged as both a dance troupe and a band. This allowed the local Borroloola community to see the scope of what's possible for their own groups. It is hoped by strategically engaging such a well-known group from the Gulf Region, local young people are inspired and encouraged to engage in their own traditional cultural practices at a deeper level.

A series of diverse engagement activities and initiatives took place in the lead up to DanceSite:

- **Music program for local bands**—feedback from 2013 revealed a desire to utilise available production equipment to provide a platform for local bands. Sandridge Band and Perfect Cult performed forty-five minute sets at the event and attracted young people who may not have otherwise attended.
- **Hip hop workshops and performance**—Ghenoa Gela, an Indigenous dancer with a background in Torres Strait Islander dance, visited Borroloola a week out from the event to run daily workshops with young people. Her presence created a lot of excitement, with over 120 young people participating in four days of rehearsals and workshops. A group of fifteen then performed their learnt routine as part of the festival program.
- **Showcase of local stories through animation**—ITDP was lucky enough to secure a series of animations spoken in the local Yanyuwa language by linguist John Bradley, which were screened at the event.
- **Marketplace**—ITDP has been very successful in delivering a monthly community arts market in partnership with the Waralungku Arts Centre. DanceSite was yet another opportunity for local small businesses to sell food, art, craft and clothing to a large audience.
- **Security**—six local men and women were employed as security for DanceSite, working alongside event management.
- **Men's group engagement**—ITDP successfully engaged local men's groups in the lead up to DanceSite, developing a dialogue with those who have been unable to undertake work or other full time activities. A mutually beneficial partnership, activities resonated with the group, providing them with financial assistance and casual employment opportunities.
- **Visual arts and crafts**—students engaged in the Waralungku visual arts program created large scale bamboo lanterns.



Image at left: Red Flag Dancers. Photographer: Benjamin Warlungundu Bayliss. Above - Scenes from DanceSite 2014. Photographer: Benjamin Warlungundu Bayliss.

ITDP

Additional activities and initiatives

ITDP facilitates activities throughout the year to develop both the community and dance groups to ensure there is ongoing capacity building, as well as cultural maintenance. These activities assist in helping to deliver the overarching objectives behind DanceSite. This year ITDP organisers, in consultation with the community, decided it would be best to work more locally with each of the five Borroloola-based dance groups to determine what areas of support were needed before facilitating a series of activities to build local engagement and encourage capacity building.

Dancing on Country

The rationale for Dancing on Country was to provide each dance group a unique opportunity to take their dancers and young people to the geographical sites related to the particular dances performed. This helped to provide context for dancers, developing their understanding and awareness of where each dance and ceremony comes from.

ITDP staff worked closely with each group to identify the location and participants who were to attend. Three out of five camps were delivered over a period of three months leading up to DanceSite, while the remaining two took place later in the year.

It is important to note the positive response and outcomes for those who were able to attend. ITDP employed locals to support with the logistics of travel and cooking, which saw a significant amount of funds go back into the community.

Professional development and training

ITDP staff secured training funds for Marlene Timothy from the Australia Council for the Arts to help support and build her capacity while working. Marlene is currently studying a Certificate III in Events Management through Charles Darwin University. Marlene also attended entry-level training in Microsoft Word and Excel, which has allowed her to now study in an ongoing basis. Lia Pa'apa'a provides ongoing support to Marlene in her studies.

Potential creative development

ITDP engaged Brisbane-based Fred Leone, an artistic director, traditional dancer and emcee, to deliver a series of workshops around dance, storytelling and confidence building in Borroloola and Robinson River. Fred met with key Elders from the five dance groups within the Borroloola community to scope their interest in participating in the development of a show or choreographed piece that can be performed locally with the option of touring nationally.



Bush camps - damper and dancing. Photographer: Lia Pa'apa'a



Borroloola Community Arts Markets (BCAM)

In response to the success of the DanceSite market stalls in 2013, ITDP partnered with the Warlungku Art Centre to establish monthly community markets to take place throughout the dry season. The stalls have continued to develop their product and display, with eight regular stallholders and additional monthly participants.

BCAM has proven to be a popular and valuable addition to the monthly calendar. A traditional dance group has been engaged to perform at each market, providing an ongoing local platform for other dance groups and children to perform publicly.

Above: locally made beads. Below: Ready to perform at DanceSite 2014. Photographer: Benjamin Warlungundu Bayliss





Audio training in Alice Springs. Photographer: Louise Partos

Audio Descriptive training

Artback NT, in partnership with Access2Arts SA, successfully proposed a national strategic initiative to the Australia Council aimed at developing training for an audio tool delivered via MP3 to accompany our travelling visual arts exhibitions. Lara Torr from Access2Arts was engaged to deliver audio descriptive training to seven arts workers from across the NT including Alice Springs, Katherine, Tennant Creek and Darwin. The audio descriptive access was launched at *Colours of the Country III* in Darwin, with twelve audio described pieces within the national touring exhibition. Since this time, Lara has continued to work with Artback NT to describe works included in the *Punuku Tjukurpa* exhibition.

One way of defining excellence is by access; this initiative provides a tool to cross boundaries and has the potential to be incorporated within all of Artback NT's touring programs. It also provides an alternative visitor experience for those with low literacy issues and is lots of fun for sighted visitors as well! Artback NT intends the audio tool will become a standard exhibition touring item for all our future travelling visual arts exhibitions.

ARTBACK NT DISABILITY ACTION PLAN 2014

Artback NT strives to operate ethically in its dealings with all staff, artists, audience members and program participants regardless of cultural, religious, ethnic, gender or other differences. We understand that the context in which we work demands a practice that is both inclusive and flexible.

MEASURABLE TARGETS	ACHIEVEMENTS AGAINST TARGETS
GOAL ONE - To show leadership by promoting excellence in arts and disability practice	
Continue to provide opportunities for visual artists with disability to develop new partnerships, develop and tour their work.	
<ul style="list-style-type: none">Source funding; build relationshipsFacilitate the development of new work through linking artists and organisations (<i>Please Touch</i>)	<ul style="list-style-type: none">Funding sourced through the Australia Council for the ArtsRelationships established with disability advocates and organisations throughout AustraliaMeeting in Hobart with Arts Access Australia (AAA)Seven partnerships developed with national venues for <i>Please Touch</i>.
Continue to provide opportunities for NT performing artists with disability to tour their work in the NT and nationally	
A minimum of one development/tour to include artists with disability Engage with a minimum of two disability organisations through tours Disseminate information; support artists and audiences; facilitate relationships re the content of <i>Mokuy</i>	Thirteen artists shortlisted after an EoI process for inclusion in <i>Please Touch</i> Access organisations in two exhibition venues areas contacted re audio description opportunities Relationship with mental health organisations re their presence at the premiere of <i>Mokuy</i> , May 2014
Continue working with partners to assist in developing projects supporting the work of artists with disability	
Initiate discussions with a minimum of two partners for collaboration for the development of tactile exhibition <i>Please Touch</i> Identify funding sources for exhibition development and touring	Strengthened existing relationships with AAA and Darwin Community Arts (DCA). Developed new relationships with the Creative Robotics Lab (CRL) at the University of New South Wales and DADAA WA. A Visions of Australia development funding application to be submitted
Continue to explore ways of increasing access to visual arts exhibitions for people who are blind or have low vision, whose access to the visual arts is limited or who have literacy issues	
Confirm partnerships for the MP3 project – to be delivered in June. Showing leadership within the arts sector regarding access issues. Provide skills development and training to eight participants from across the NT arts sector Product - audios to travel with the <i>Colours of the Country III</i> exhibition and eventually with all exhibitions as a standard installation item	All partnerships confirmed and training project delivered. Eight individuals from across the NT chosen to train as professional audio describers. Seven completed the training over the five days. Audio description project launched at the opening of the <i>Colours of the Country III</i> exhibition in Darwin: twelve beanies audio described. Desert Mob exhibition items were also audio described at Araluen Art Centre to further practice audio describing.
Assist in audience development for people with disability	
Work locally, regionally and nationally with presenting partners to ensure venue access	Ongoing across all of the organisation's programs
GOAL TWO - To increase awareness of arts and disability issues within the organisation	
Actively encourage applicants with a disability to apply for positions	
Ensure that interview panels are up to date on equal opportunity employer responsibilities Provide information to interested applicants regarding wage subsidies and support services available for employees with disability Make sure staff are familiar with the National Arts and Disability Strategy	Achieved and ongoing Achieved and ongoing Achieved and ongoing
Work with Arts NT and the NT Government to continue upgrading Frog Hollow Centre for the Arts to improve access	
Identify the best method to improve access to a heritage building with access issues Access issues are identified on a minimum of 85% of all Anchor Tenant agendas/meetings with the NTG and Frog Hollow residents	Achieved. A portable ramp has been purchased for wheelchair access to the Artback NT office. Achieved and ongoing
Continue assisting in the dissemination of information regarding opportunities empowering people with disability to participate in or gain access to the arts	
An increase of a minimum of 10% in increased sharing of information between organisations regarding arts and disabilities. Increase in opportunities to access/and or participate in the arts in the NT	Increase achieved Access organisations in exhibition venues areas contacted to ensure they are aware of our audio description opportunities
GOAL THREE – Tracking progress and reporting	
DAP Board Sign-off	
Disability Action Plan endorsed by the board	Achieved
DAP Review	
Reviewed and endorsed by the board	Achieved
Successful projects, tours and events	
KPIs as in strategic plan; yearly program	Achieved



ARTBACK NT RECONCILIATION ACTION PLAN 2014

Reconciliation is embedded in everything Artback NT delivers ranging from skills development to touring activities. Artback NT supports and promotes the cultural life of the Territory and engages with many Indigenous and non-Indigenous communities throughout the Territory and nationally. All staff operate from a community cultural development background and are committed to skills development, governance mentorship and training for Indigenous artists and audiences. The organisation’s programming is reflective of Indigenous and non-indigenous talent and expression and ATSI people are encouraged to apply for any position available.

ACTION	MEASURABLE TARGETS	ACHIEVEMENTS AGAINST TARGETS
Governance throughout all of Artback NT’s activities		
Indigenous representation on the Board	A minimum of two Indigenous Board members at all times	Achieved and ongoing
Respect for Indigenous cultural protocols	<ul style="list-style-type: none">• Welcome to Country and other protocols where appropriate• Artback NT touring guidelines incorporate protocols• Touring parties to be inducted by Artback NT tour managers	Achieved and ongoing Achieved and ongoing Achieved and ongoing
Respect for Indigenous intellectual property	<ul style="list-style-type: none">• Contracts to have culturally appropriate clauses• Adherence to the Indigenous Art Code• Website to have appropriate acknowledgements• Comprehensive and culturally secure image and other release forms	Achieved in revised contracts Achieved and ongoing Achieved and ongoing Achieved and ongoing
Ochre cards and all requirements completed before entering Indigenous communities	<ul style="list-style-type: none">• All tours have up to date governance requirements• Adherence regarding requirements for appropriate permits through Land Councils	Achieved and ongoing Achieved and ongoing
Respectful relationships between Indigenous and non-indigenous people		
Strategic Planning	Updated 2012 – 2014 strategic plan is recognised and used by all staff All staff and Board will contribute in planning sessions for the 2015 – 2017 strategic plan.	Achieved Welcome to Country – strategic planning workshop, July 2014 2015 - 2017 strategic planning ongoing
Vision Statement	Vision statement links communities, empowers artists and facilitates quality cultural experiences for remote and regional audiences	Achieved and ongoing across all of the organisation’s programs
Arts development and touring program—exhibitions, events, workshops and skills development	Touring program has content that includes, responds to and promotes Indigenous visual arts, performance and music	Achieved and ongoing across all of the organisation’s programs See 2014 touring map for details
Respect for Indigenous people, culture, land and history		
Indigenous Traditional Dance Program (ITDP)	<ul style="list-style-type: none">• Indigenous employment—Cultural Engagement Officer position• Appropriate professional development offered and mentoring support available if and when required	Marlene Timothy, Cultural Engagement Officer, Borroloola. Professional devt includes: Funding sourced for study Certificate III in Events Management through CDU. Entry-level training in Microsoft Word & Excel Work placement with the NIMAs in Darwin, August 2014. Ongoing work for Marlene results from this.
Dance forums	<ul style="list-style-type: none">• Recognition of cultural knowledge• Artist fees• Intergenerational teaching• Cultural maintenance	Achieved and ongoing Achieved and ongoing 2389 artists engaged 20 arts workers engaged ITDP audience and participants: DanceSite: 1000+ Borroloola Community Art Markets: 1000+ Dancing on Country Camps: 428 Community Activities: 1900 Professional Development: 27
Music development and touring	<ul style="list-style-type: none">• Offer a minimum of 3 mentoring experiences• Offer minimum of 3 professional devt opportunities within the Territory, nationally or internationally• Creation of the Road Safety All Stars• Facilitation of the Ramingining and Milingimbi Music Festivals	7 mentoring experiences offered 5 professional devt opportunities offered Road Safety All Stars created; CD launched; performance at Merrepen Festival Partnership with ALPA re funding/grants apps for Ramingining and Milingimbi Festivals.
Performance development and touring	<ul style="list-style-type: none">• 2 developments/tours featuring Indigenous content and performers—<i>Donate Life</i> and <i>Mokuy</i>, Gary Lang NT Dance Company• 5 tours visiting remote comms within the NT	Achieved 5 tours within the NT and 1 throughout WA
Visual Arts development and touring	<ul style="list-style-type: none">• Education kits to accompany touring exhibitions• Exhibition collateral that illustrates and promotes Indigenous content in a culturally appropriate manner• Development of a major new visual arts exhibition.	Extensive education kit and appropriate collateral for <i>Punuku Tjukurpa</i> achieved. Exhibition launch 27 March 2015 at the South Australian Museum, Adelaide

Opportunities for Indigenous people, organisations and communities

DanceSite event: Presentation and showcase of traditional Indigenous Dance from 10 language groups in the NT + special guest headline dancers from other regions	Event held in Borroloola 18-19 July 2014 Local event management committee formed and holds 4-5 meetings to establish correct cultural protocols, select participants and oversee production process Over 150 Indigenous performers participating Placement of local Indigenous event management trainees and mentorees	DanceSite delivered Local committee met 7 times Bands/musicians: 9 Mara Dancers: 18 Gurdanji Dancers 23 Ngardiji Dancers 16 Wandangula Dancers 44 Red Flag Dancers 22 Saibai/Murray Island 4 Security – 8 x comm members Production crew – 6 x comm members Catering – 2 x comm members Local transportation – 1 x comm member Event management support – 1 x comm member
Dance forums: opportunities for cultural maintenance, intergenerational training and professional dance development through the ITDP.	A minimum of 4 forums per year Participation in DanceSite Participation in other national festival dance events if appropriate	3 dance forums delivered DanceSite delivered Ghenoa Gela delivered HipHop workshops Fred Leone delivered traditional dance workshops, Borroloola & Robinson River schools. Participation in APAM and Darwin Festival
Music development and touring: Capacity building throughout the Territory. Significant development activity in order to increase performance outcomes	Touring to a minimum of 4 remote Indigenous communities A performance outcome at a minimum of 3 remote Indigenous community festivals A minimum of \$100,000 secured for Indigenous and cross cultural projects and development	Touring to 6 remote Indigenous communities Achieved Over a quarter of a million dollars secured
Performance development and touring: Capacity building and succession planning Territory and nationwide.	A minimum of 2 tours developed with Indigenous artists, producers, companies A minimum of \$100,000 secured by PATM for Indigenous and cross cultural projects and development Djuki Mala—Providing paid employment for a remote arts troupe for four months reaching 39 venues with 68 performances plus workshops.	3 tours developed Over half a million dollars secured Djuki Mala – paid employment for 9 Indigenous artists/arts workers. 64 shows delivered to 39 locations in 5 remote, 18 regional and 13 metro venues.
Visual Arts development and touring: Development of a significant Indigenous exhibition— <i>Punuku Tjurkupa Colours of the Country III</i> touring nationally with significant Indigenous content.	<i>Punuku Tjurkupa</i> —in development. 100% Indigenous content Beanie Festival— <i>Colours of the Country III</i> —touring. Over 75% Indigenous content	13 venue tour confirmed for <i>Punuku Tjurkupa</i> across 5 States and 2 Territories 2015-2018. 13 venue national <i>Colours of the Country III</i> tour launched Darwin 7 August 2014. Over \$150,000 dollars secured One Indigenous Curator mentored

Tracking progress and reporting

RAP review	Activities as listed above	Achieved and ongoing
Successful projects, tours and events	KPIs as in strategic plan; yearly program	Achieved and ongoing



Photographer: Mathew McHugh



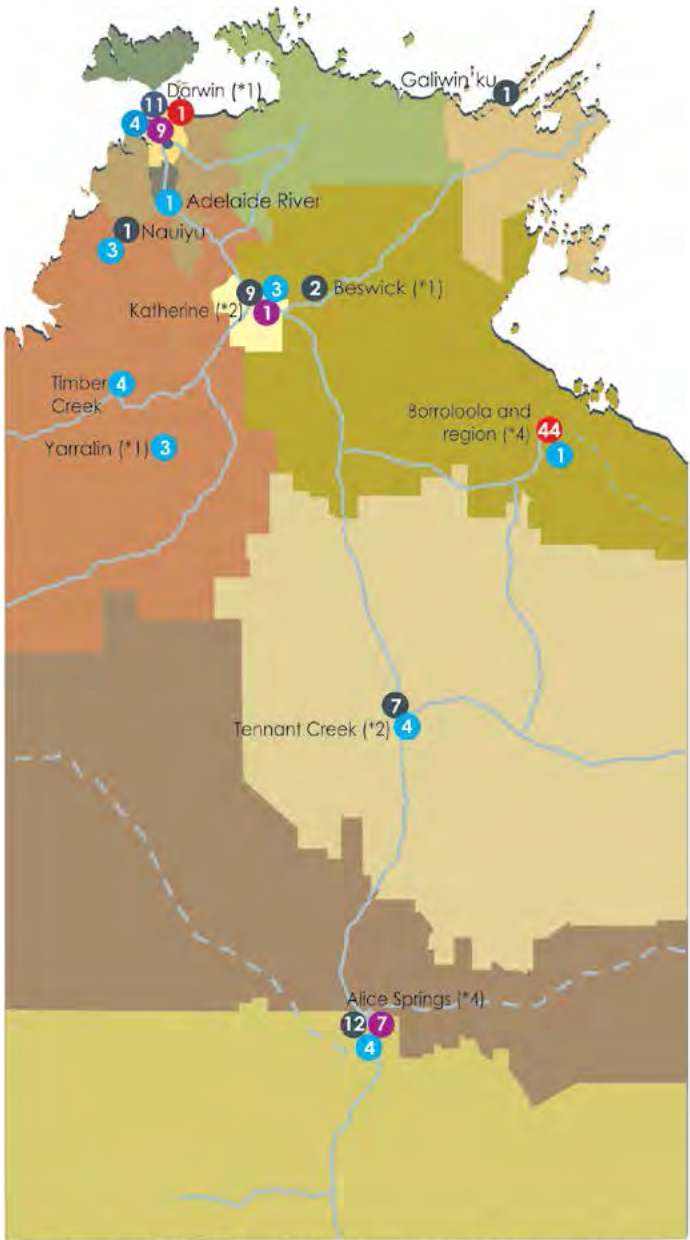
Artback NT - Northern Territory Activity - 2014

Total number of NT events by location and attendance

Location	Total events	Total audience
Alice Springs	23	2134
Borroloola and Gulf Region	45	5878
Darwin	25	6097
Galiwin'ku	1	60
Katherine	13	3348
Nauiyu/Wooliana	4	1400
Mt Bundy	1	9
Tennant Creek	11	1639
Timber Creek	4	100
Wugularr/Beswick	2	57
Yarralin	3	193
	132	20,915



Djuki Mala toured nationally with Artback NT in 2014.
Photographer: Sean Young



NT map showing scope of Artback NT delivery across all 5 municipalities and 11 local government shires in 2014.

LEGEND

- Performing Arts
- Visual Arts
- Indigenous Traditional Dance
- Music

Numbers in circles indicate number of events in that location.

Asterisks and numbers alongside place name indicate schools events at that location.

In 2014 Artback NT delivered 132 program events to a total of 11 locations across the Northern Territory, reaching an audience of 20,915. Artback NT reached a total audience of 52,212 in 2014.

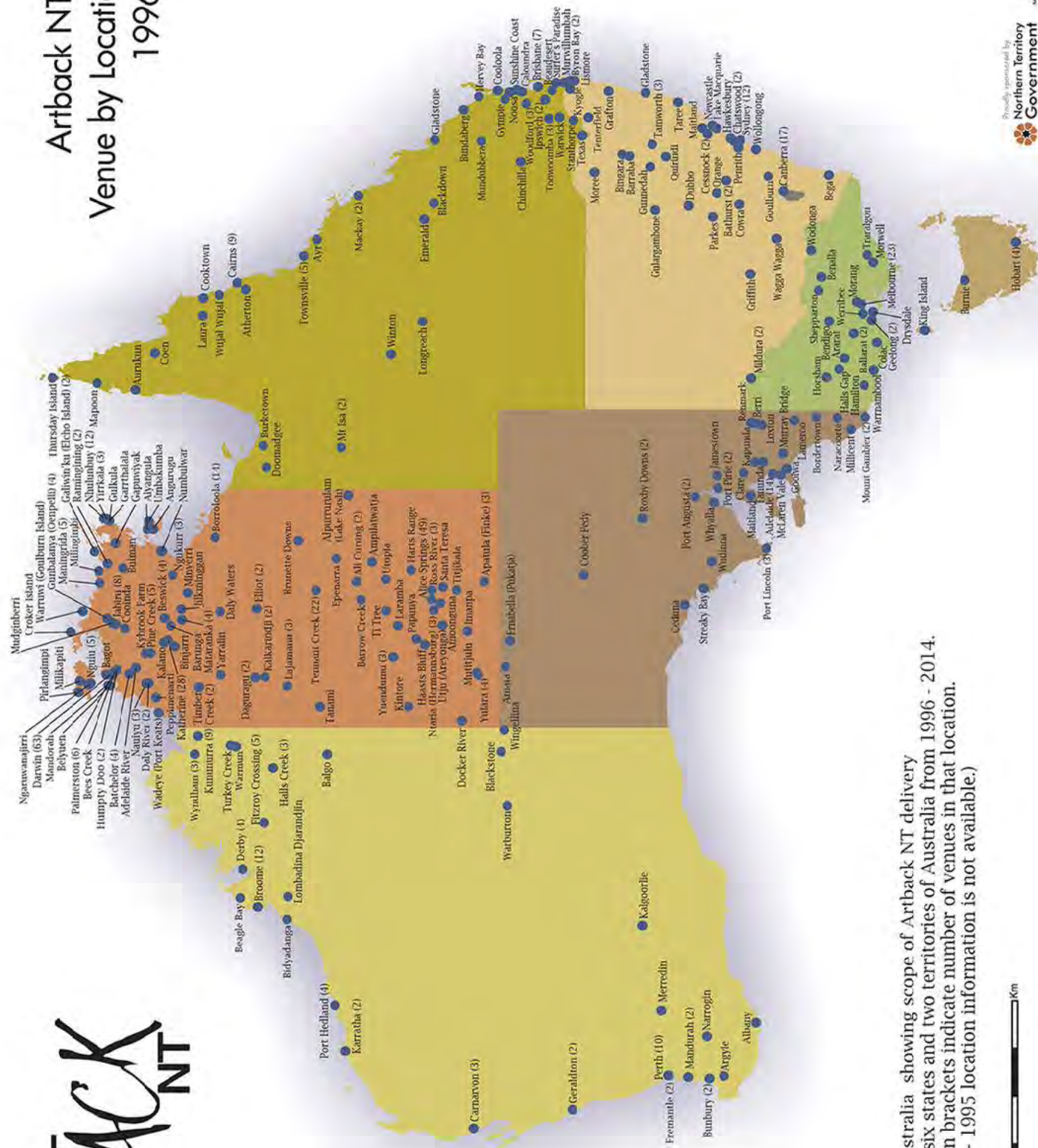
Arts delivery across four program streams included:

- Visual Arts – total of 18 program events, with 17 in the NT and one nationally
- Performing Arts – total of 157 program events, with 43 in the NT and 114 nationally
- Indigenous Traditional Dance – total of 52 program events, with 45 in the NT and seven nationally
- Music – total of 41 program events, with 27 in the NT and 14 nationally.

In addition, Artback NT also:

- presented sixteen school events across the Territory
- continued to extensively develop the Indigenous Traditional Dance Program and DanceSite in Borroloola, with this project reaching audiences of 5,300 people
- maintained partnerships with a wide variety of organisations including Donate Life, partnership with a wide variety of organisations including Donate Life, Waralungku Art Centre, Mabunji Aboriginal Resource Association, Barkly Regional Arts, Katherine Regional Arts and Godinymayin Yijard Rivers Arts & Culture Centre.

On a national level, Artback NT delivered 136 high quality program events to 64 locations nationally and engaged audiences of 31,297 people.



Paper lantern at DanceSite 2014. Photographer: Benjamin Warlingundu Bayliss.

Artback NT

Profit & Loss Statement

January 2014 through December 2014

Income		
Grants		
Grants (Com) Operating Recurre		
Australia Council Triennial	\$80,440.00	
Grants (Com)Projects Non-recur		
Australia Council Supplemental	\$178,389.00	
Visions of Australia	\$125,519.00	
Organ & Tissue Authority	\$70,000.00	
Australia Council Comm Partner	\$150,000.00	
Grants (State) Operating Recur		
Arts NT Operational	\$287,964.00	
Grants (State)Projects Non-rec		
Frog Hollow Anchor Tenant	\$70,000.00	
Arts NT Other Grants	\$124,157.00	
Arts NT Music Touring	\$137,500.00	
Road Safety Branch	\$82,499.00	
Other Grants State	\$26,680.00	
Other Grants	\$3,000.00	
Grants (Local) Capital		
Community Benefit Fund	\$4,388.18	
Total Grants		\$1,340,536.18
Income Other		
Artback NT Support	\$64,479.39	
Support from other funded prog	\$95,590.12	
Total Income Other		\$160,069.51
In Kind Support		
Arts NT In-kind	\$130,085.00	
Music Touring In-kind Support	\$43,555.00	
In Kind Support Other	\$46,112.00	
Mabunji In-Kind Support	\$42,380.00	
Total In Kind Support		\$262,132.00
Unexpended grants 2013		
Projects Unexpended Grants	\$80,740.82	
Unexpended grants Arts NT	\$12,321.90	
Unexpended grants Arts NTMusic	\$2,144.06	
Unexpended Arts NT Region Arts	\$20,000.00	
Unexpended grants Visions	\$66,904.56	
Unexpended grants Aust Council	\$127,347.54	
Unexpended Playing Australia	\$194,893.18	
Unexpended Amounts 2013	\$155,864.76	
Total Unexpended grants 2013		\$660,216.82
Trading/Operating Activities		
Sale of Goods		
Auspices Fees	\$2,857.00	
Catalogue sales ReCoil	\$654.51	
Exhibition Fees	\$6,000.00	
Performance Fees	\$276,164.30	
Box Office Returns	\$27,041.50	
Royalties	\$54,063.71	
Consultancies/Tour Mgmt/ Comm	\$29,169.46	
Visual Arts Tour Management	\$500.00	
Service Provision	\$115,541.30	
Workshops	\$1,162.50	
Total Sale of Goods		\$513,154.28
Other Income		
Interest - Unrestricted	\$29,567.24	
Sponsorships and Donations		
Sponsorship/Donations	\$20,783.48	
McArthur River Mines	\$45,454.55	
Total Sponsorships and Donations		\$66,238.03
Recoupments		
Travel and accommodation	\$14,282.18	
Miscellaneous Income	\$6.54	
Tenant Levy	\$24,052.00	

Artback NT

Profit & Loss Statement

January 2014 through December 2014

Total Trading/Operating Activities	\$647,300.27
Total Income	\$3,070,254.78
Expenses	
Operational	
Advertising-General	\$800.02
Anchor Tenant Cleaning	\$16,602.17
Anchor Tenant Electricity	\$33,525.09
Audit Fees	\$3,667.00
Bank Charges	\$920.69
Bank Charges - Credit Card	\$778.77
Bad Debts	\$5,000.00
Board/Governance Expenses	\$1,321.31
Board - travel / accommodation	\$13,014.46
Business/Strategic Planning	\$22,430.61
Computer / Electronic R & M	\$6,216.60
Depreciation - Plant & Equipme	\$7,836.00
Design work	\$1,182.50
Insurance-Commercial Package	\$8,723.59
Insurance-Goods in Transit	\$350.00
Internet Account	\$2,905.12
Interest	\$504.23
Management Support	\$64,479.39
Meeting Expenses	\$768.98
Motor Vehicle Fuel	\$90.86
Motor Vehicle R&M / Other	\$5,120.35
Office Expenses	\$1,842.70
Photocopier	\$1,814.23
Postage	\$1,317.55
Printing & Stationery	\$3,703.64
Promotional Expenses	\$3,381.49
Publications - Subscriptions	\$1,831.82
Sundry Expenses	\$949.69
Telephone	\$6,842.39
Telephones-Mobile	\$4,367.95
Telephone - Satellite	\$505.24
Tenant Levy	\$5,837.01
Web Design & Ongoing Support	\$7,646.25
Total Operational	\$236,277.70
Wages & Salaries	
Annual Leave + Load Provision	-\$11,273.89
Provision Long Service Leave	\$7,799.37
Other Wages	\$67,257.40
Anchor Tenant	\$44,007.90
Communications Officer	\$28,496.03
Executive Officer	\$86,740.84
ITDP Manager	\$76,589.39
ITDP Project Officer	\$9,362.25
Music Touring Manager	\$62,148.53
Performing Arts Touring Manage	\$83,277.47
Visual Arts Manager	\$47,445.61
VA Touring Manager	\$28,171.56
Bookkeeper	\$2,595.60
Total Wages & Salaries	\$532,618.06
Superannuation	\$77,042.30
Staff Related Costs	
Insurance-Workers Comp	\$16,652.45
NETS - HEELER Travel & Accom	\$2,829.37
PD-Travel & Accom & Per Diems	\$5,588.19
PD-Registrations/Fees	\$474.55
Recruitment	\$4,404.38
Staff Amenities	\$748.77
Staff Management	\$2,394.54
Staff Training	\$1,271.31

Artback NT

Profit & Loss Statement

January 2014 through December 2014

Total Staff Related Costs	\$34,363.56
Production Exhibition Program	
Program-Visual Arts	
V - Advertising & Promotion	\$4,927.50
V - Artists Fee	\$46,371.02
V - Contractors	\$45,169.90
V - Design & Graphics	\$6,872.50
V - Exhibition Development	\$38,037.90
V - Freight & Postage	\$4,852.47
V - Research & Develop	\$7,730.00
V - Travel & Accom	\$31,091.88
V - Other Costs	\$14,157.62
V - Crating / Framing	\$2,027.63
V - Artist-in-Residence	\$25,887.33
Total Program-Visual Arts	\$227,125.75
Program-Performing Arts	
P - Royalties	\$56,363.71
P - Artist Fees & Allow	\$493,848.45
P - Advertising & Prom	\$85,591.10
P - Design & Graphics	\$7,052.50
P - Travel & Accom	\$402,870.40
P - Other Costs	\$50,937.77
P - Production	\$174,573.15
Total Program-Performing Arts	\$1,271,237.08
Program Development	
Program Develop-Travel & Accom	\$66,634.80
Project Resource	\$3,368.20
Project Administration	\$72,857.72
Total Program Development	\$142,860.72
Total Production Exhibition Program	\$1,641,223.55
In Kind Support	
Arts NT In Kind Support	
In Kind-Accomodation	\$86,527.00
In Kind-Cleaning	\$271.00
In Kind-Repairs&Grounds Maint	\$16,710.00
In Kind-Security	\$2,688.00
In Kind-PAWA and Garbage Disp	\$2,839.00
In-Kind-A/L Management Service	\$21,050.00
Total Arts NT In Kind Support	\$130,085.00
Total In Kind Support	\$130,085.00
Total Expenses	\$2,651,610.17
Operating Profit	\$418,644.61
Other Income	
Other Expenses	
Unexpended Arts NT grants	\$13,130.00
Unexpended Arts NT Music	\$58,354.65
Unexpended Aust Council grants	\$49,712.29
Unexpended Aust Coun Comm Part	\$32,650.58
Unexpended Visions grants	\$149,131.97
Transfer Unexpended Amounts	\$64,115.79
Returned Grant Monies	\$21,184.79
Total Other Expenses	\$388,280.07
Net Profit/(Loss)	\$30,364.54

Artback NT

Balance Sheet

As of December 2014

Assets	
Current Assets	
NAB Cheque Account 691	\$71,283.39
Artback NT Roco Fund 0348	\$1,698.00
Load and Go Prepaid Card 1	\$5.05
Load and Go Prepaid Card 2	\$61.60
Petty Cash Account-Darwin	\$148.75
Petty Cash Account-Alice	\$87.45
To be reimbursed	\$568.18
Prepayments	\$5,454.60
Trade Debtors	\$4,048.00
Investment Accounts	
NAB Investment Acc 769	\$218,492.76
NAB Investment Acc 8394	\$50,000.00
NAB Investment Acc 1628	\$100,000.00
NAB Investment Acc 7952	\$200,000.00
Total Current Assets	\$651,847.78
Non Current Assets	
Long-Term Investments	
NAB Credit Card Term Deposit	\$15,000.00
Plant & Equipment	
Plant & Equipment-at cost	\$31,320.00
Plant & Equipment-Accum Dep	-\$23,100.00
Motor Vehicles	\$20,000.00
M/V Accum Dep	-\$8,288.00
Total Plant & Equipment	\$19,932.00
Total Non Current Assets	\$34,932.00
Total Assets	\$686,779.78
Liabilities	
Current Liabilities	
Trade Creditors	\$1,669.45
Accrued Expenses	\$2,500.45
NAB Loan	\$1,763.39
Credit Cards	
Visa Card - Alice 7907	\$2,188.20
Visa Card - Louise 0284	\$1,926.35
Visa Card - Lia 8454	\$130.92
Visa Card - Angela 9889	\$388.56
Visa Card - Hutchins new 5289	\$9.00
Visa Card - Joshua Grant	\$9.00
Total Credit Cards	\$4,652.03
GST/PAYG Liabilities Owing	
GST Collected	\$28,258.61
GST Paid	-\$13,496.93
PAYG Liability	\$10,466.09
Total GST/PAYG Liabilities Owing	\$25,227.77
Superannuation Liability	
Superannuation Payable	\$14,099.70
Provisions	
Annual leave + Load provision	\$28,926.65
Provision for Long Service	\$7,799.37
Unexpended Grants 2014	
Unexpended - Arts NT	\$21,125.00
Unexpended Arts NT Music	\$58,354.65
Unexpended Aust Council	\$43,414.83
Unexpended Aust.Council Comm	\$38,948.04
Unexpended Grants Visions	\$149,131.97
Unexpended Grants General	\$64,115.79
Total Unexpended Grants 2014	\$375,090.28
Monies Received in Advance	
Advance Grant Australia Council	\$40,501.00
Total Monies Received in Advance	\$40,501.00
Total Liabilities	\$502,230.09
Net Assets	\$184,549.69
Equity	
Retained Earnings	\$154,185.15
Current Earnings	\$30,364.54
Total Equity	\$184,549.69

**ARTBACK NT ARTS
DEVELOPMENT AND
TOURING INCORPORATED
ABN 72 598 610 340**

Special Purpose Financial Statements
For the year ended 31 December 2014

JKY & CO

Certified Practising Accountant

PO Box 38233

Winnellie NT 0821

**ARTBACK NT ARTS DEVELOPMENT AND TOURING INCORPORATED
STATEMENT BY THE COMMITTEE
FOR THE YEAR ENDED 31 DECEMBER 2014**

The Committee has determined that the association is not a reporting entity and that this special purpose financial report should be prepared in accordance with the accounting policies outlined in Note 1 to the financial statements.

In our opinion –

- a) the accompanying financial report as set out on the following pages, being a special purpose financial statement, is drawn up so as to present fairly the state of affairs of the Association as at 31 December 2014 and the results of the Association for the year ended on that date;
- b) the accounts of the Association have been properly prepared and are in accordance with the books of account of the Association; and
- c) there are reasonable grounds to believe that the Association will be able to pay its debts as and when they fall due.

We confirm as follows:

- (a) The names of each committee member of the association during the relevant financial year were:

Juliette Hubbard
John Oster
Jenny Pender
Gary Single
Kathryn Gary
Liam Campbell
John Waight
Denise Salvestro
Francine Chinn

(b) The principal activities of the association during the relevant financial year were:

- To develop and tour arts programs and activities that demonstrates a commitment to quality, diversity and equity across the Northern Territory.
- To work collegially and co-operatively with artists, art organisations, communities and Government to develop audiences, professional practice and presentation opportunities for the touring of all artforms within the Northern Territory.
- To network locally, regionally, nationally and internationally for the touring promotion and presentation of works by Northern Territory artists, communities and arts organisations.

(c) The profit of the association for the relevant financial year was:
\$ 30,364.54


CHAIRMAN

26/02/15
DATED


TREASURER

23/02/15
DATED

JKY & CO.

CERTIFIED PRACTISING ACCOUNTANT

PO Box 38233
48 Albatross Street
WINNELLIE NT 0821
Ph: 08 8947 7030
Fax: 08 8947 7032

JOHN YOUSEF FCPA, CA

Commissioner for Oaths

ARTBACK NT ARTS DEVELOPMENT AND TOURING INCORPORATED

INDEPENDENT AUDITOR REPORT

FOR THE YEAR ENDED 31 DECEMBER 2014

SCOPE

I have audited the attached special purpose financial report of the Artback NT Arts Development and Touring Incorporated for the period ended 31 December 2014. The Management Committee is responsible for the preparation and presentation of the financial report and the information contained therein, and has determined that the accounting policies and described in note 1 to the financial statements which form part of the financial report are appropriate to meet the requirements of the Associations Act, used are consistent with the financial reporting requirements of the entity's constitution and are appropriate to meet the needs of the members. I have also conducted an independent audit of the financial report in order to express an opinion on it to the members of the Artback NT Arts Development and Touring Incorporated. No opinion is expressed as to whether the accounting policies used, and described in note 1, is appropriate to the needs of members.

The financial report has been prepared for distribution to the members for the purpose of fulfilling the Management Committee's financial reporting requirements under the constitution of the Artback NT Arts Development and Touring Incorporated and the Associations Act. We disclaim any assumption of responsibility for any reliance on this report or on the financial report to which it relates, to any person other than the members, or for any purpose other than that for which it was prepared.

My audit has been conducted in accordance with Australian Auditing Standards to provide reasonable assurance as to whether the financial report is free from material misstatement. My procedures included examination, on a test basis, of evidence supporting the amounts and other financial disclosures in the financial report and the evaluation of significant accounting estimates. These procedures have been undertaken to form an opinion as to whether in all material respects, the financial report is presented fairly in accordance with accounting policies described in note 1, so as to present a view which is consistent with our understanding of its financial position and performance of the Artback NT Arts Development and Touring Incorporated as represented by the results of its operations and cash flows.

ARTBACK NT ARTS DEVELOPMENT AND TOURING INCORPORATED

INDEPENDENT AUDITOR REPORT

FOR THE YEAR ENDED 31 DECEMBER 2014

The audit opinion expressed in this report has been formed on the above basis

AUDIT OPINION

It is my opinion that:-

- (i) The financial report of the Artback NT Arts Development and Touring Incorporated is properly drawn up so as to give a true and fair view of the financial position of the Association as at 31 December 2014 and of its results for the year ended on that date.
- (ii) The rules relating to the administration of the funds of the Association have been observed.


JKY & Co.

18/02/2015
DATED

ARTBACK NT ARTS DEVELOPMENT AND TOURING INCORPORATED

ABN 72 598 610 340

Profit and Loss Statement - ARTBACK NT

For the year ended 31 December 2014

	2014 \$	2013 \$
Income		
Sales	513,154.28	441,086.25
Grants (Com) Operating Revenue	80,440.00	80,000.00
Grants (Com) Projects Non Recurrent	523,908.00	693,450.00
Grants (State) Operating Recurrent	287,964.00	279,864.00
Grants (State) Projects Non Recurrent	443,836.00	361,999.00
Grants (Local) Capital	4,388.18	-
Other Grants	45,454.55	-
In-Kind Support	132,047.00	194,130.68
Artback Support	290,154.51	109,947.97
Support from other funded programs	-	21,742.67
Sponsorship / Donations	20,783.48	116,696.25
Unexpended Grants	660,216.82	236,777.31
Interest received	29,567.24	23,065.10
Other income	6.54	3,641.40
Recoupments	38,334.18	65,967.78
Total	3,070,254.78	2,628,368.41
Expenses		
Advertising and promotion	800.02	627.00
Anchor Tenant	50,127.26	49,558.59
Audit fees	3,667.00	3,472.73
Bad Debts	5,000.00	-
Bank Fees And Charges	1,699.46	1,754.00
Board Expenses	14,335.77	13,644.92
Business Plan	22,430.61	-
Computer Expenses	6,216.60	-
Depreciation - plant	7,836.00	7,149.00
Design Work	1,182.50	-
Email, Internet and Website	2,905.12	11,747.33
Other Operational Expenses	18,039.80	26,951.31
Insurance	25,726.04	27,418.49
In-Kind Support	130,085.00	105,606.89
Interest - Australia	504.23	823.10
Management Support	64,479.39	109,947.97
Program - Visual Arts	227,125.75	172,923.84
Program - Performing Arts	1,271,237.08	695,978.55

ARTBACK NT ARTS DEVELOPMENT AND TOURING INCORPORATED

ABN 72 598 610 340

Profit and Loss Statement - ARTBACK NT

For the year ended 31 December 2014

	2014	2013
	\$	\$
Program - Development	142,860.72	127,680.49
Provision for annual leave	-28,963.21	-
Provision for LSL	7,799.37	-
Staff Related Costs	17,711.11	28,814.13
Subscriptions	1,831.82	-
Sundry Expenses	949.69	-
Superannuation	77,042.30	46,302.67
Telephone	11,715.58	12,272.20
Tenant Levy	5,837.01	3,820.10
Unexpended Grants - Current Year	388,280.07	660,216.82
Wages	553,781.90	508,421.24
Web Desin & Ongoing Support	7,646.25	-
Total	3,039,890.24	2,615,131.37
Net Profit	30,364.54	13,237.04

ARTBACK NT ARTS DEVELOPMENT AND TOURING INCORPORATED

ABN 72 598 610 340

Statement of Financial Position as at 31 December 2014

	Note	2014
		\$
Assets		
Current Assets		
Cash assets	2	656,777.00
Receivables	3	4,048.00
Other	4	6,022.78
Total Current Assets		666,847.78
Non-Current Assets		
Property, plant and equipment	5	19,932.00
Total Non-Current Assets		19,932.00
Total Assets		686,779.78
Liabilities		
Current Liabilities		
Payables	6	4,169.90
Financial liabilities	7	6,415.42
Current tax liabilities	8	25,227.77
Provisions	9	50,825.72
Other	1g	415,591.28
Total Current Liabilities		502,230.09
Total Liabilities		502,230.09
Net Assets		184,549.69
Equity		
Reserves		(15,988.98)
Current earnings		30,364.54
Retained profits		170,174.13
Total Equity		184,549.69

These financial statements are audited. They must be read in conjunction with the attached Audit Report and Notes which form part of these financial statements.

These financial statements are audited. They must be read in conjunction with the attached Audit Report and Notes which form part of these financial statements.

ARTBACK NT ARTS DEVELOPMENT AND TOURING INCORPORATED
NOTES TO AND FORMING PART OF THE FINANCIAL STATEMENTS
FOR THE YEAR ENDED 31 DECEMBER 2014

1. STATEMENT OF SIGNIFICANT ACCOUNTING POLICIES

Basis of accounting

The financial report is a special purpose financial report that has been prepared in accordance with Australian Accounting Standards, Urgent Issues Group Consensus Views and other authoritative pronouncements of the Australian Accounting Standards Board.

Reporting Entity

The association is not a reporting entity because in the committee's opinion there are unlikely to exist users who are unable to command the preparation of reports tailored so as to satisfy all of their information needs, and these accounts are therefore "special purpose accounts" that have been prepared solely to meet the requirements of the Constitution and the *Associations Act*.

Australian Accounting Standards set out accounting policies that the AASB has concluded would result in financial report containing relevant and reliable information about transactions, events and conditions to which they apply. Material accounting policies adopted in the preparation of this financial report are presented below. They have been consistently applied unless stated.

The Profit and loss Statements and Balance Sheet have been prepared on an accrual basis and are in accordance with historical cost convention. Except where stated no allowance is made for the effect of changing prices on the results or the financial position.

Revenues and Expenses in the association are recognised in the Profit and Loss Statements when and only when the flow or consumption or loss of economic benefits has occurred and can be easily measured.

a) Taxation

The Association believes it is exempt from all forms of taxation except PAYG and GST. Revenues and expenses are recognised net of the amount of GST, except where the amount of GST is not recoverable from the Australian Taxation Office. In these circumstances the GST is recognised as part of the acquisition of the asset or as part of an item of expense. Receivables and payables in the statement of financial position are shown inclusive of GST.

These financial statements are audited. They must be read in conjunction with the attached Audit Report and Notes which form part of these financial statements.

1. STATEMENT OF ACCOUNTING POLICIES (Contd)

b) Employee Entitlements

Provision is made for employee entitlements benefits accumulated as a result of employees rendering services up to the reporting date. These benefits include salaries and annual leave.

Liabilities arising in respect of salaries, annual leave and any other employee entitlements expected to be settled within twelve months of the reporting date are measured at their nominal amounts and are shown under current liabilities. Employee benefits payable later than one year have been measured at the present value of estimated future cash outflows to be made for those benefits.

c) Acquisition of Assets

Assets are recorded at cost on acquisition except as stated below. The cost of acquisition includes the fair value of assets transferred in exchange.

Assets acquired at no cost, or for nominal consideration, are initially recognised as, assets and revenues at their fair value at the date of acquisition, except where they are acquired as part of a transfer of functions from another Government entity, in which case they are recognised as contributed equity at the carrying amount

d) Property, plant and equipment

Plant and equipment are measured on the cost basis less depreciation and impairment losses.

The carrying amount of plant and equipment is reviewed annually by directors to ensure it is not in excess of the recoverable amount from these assets. The recoverable amount is assessed on the basis of the expected net cash flows that will be received from the assets employment and subsequent disposal. The expected net cash flows have been discounted to their present values in determining recoverable amounts.

Depreciation of Non-Current Assets

Depreciation is provided on a Diminishing and Straight line basis on property plant and equipment at rates calculated to allocate the cost or valuation less estimated residual value at the end for the useful lives of the assets against revenue over those estimated lives to the association.

e) Impairment of Assets

At each reporting date, the association reviews the carrying values of its tangible assets to determine whether there is any indication that those assets have been impaired. If such an indication exists, the recoverable amount of the asset, being the higher of the asset's fair value less costs to sell and value in use, is compared to the assets carrying value over its recoverable amount is expensed to the income statement.

These financial statements are audited. They must be read in conjunction with the attached Audit Report and Notes which form part of these financial statements.

f) **Terms Conditions and Accounting Policies**

Financial Assets

Cash at Bank

Deposits are recognised at their nominal amounts. Interest is credited to revenue as it accrues.

Cash Management

Deposits are recognised at their nominal amounts. Interest is credited to revenue as it accrues.

Receivables

These receivables are recognised at the nominal amounts due less any provision for bad and doubtful debts.

Financial Liabilities

Trade Creditors

Creditors and accruals are recognised at their nominal amounts, being the amount at which liabilities will be settled. Liabilities are recognised to the extent that the goods and services have been received (and irrespective of having been invoiced).

g) **Unexpended Grants**

The grants funds have been received for specific purpose. To the extent that the funds have not been applied for that purpose throughout the year, they are recorded as unexpended grants and are recognised as a current liability.

	2014	2013
Arts NT 2015 Indexation Op. Grant	7,995.00	-
Arts NT	13,130.00	12,321.90
Arts NT Music	58,354.65	2,144.06
Arts NT Regional Arts Fund	-	20,000.00
Australia Council	43,414.83	37,209.14
Australia Council Comm	38,948.04	90,138.40
Visions of Australia	-	66,904.56
Playing Australia	-	194,893.18
General	64,115.79	80,740.82
Chooky Dancer	-	122,730.40
Highway of lost hearts	-	33,134.36
Australia Council	-	57,720.00
Arts NT Music	-	62,500.00
Arts NT	-	3,968.00
McArthur River Mine	-	45,454.55
Arts NT Projects	-	2,422.50
Vision Development	149,131.97	-
Australia Council	40,501.00	-
Total	415,591.28	832,281.87

These financial statements are audited. They must be read in conjunction with the attached Audit Report and Notes which form part of these financial statements.

ARTBACK NT ARTS DEVELOPMENT AND TOURING INCORPORATED

ABN 72 598 610 340

Notes to the Financial Statements
For the year ended 31 December 2014

2014

Note 2: Cash assets

Bank accounts:

NAB - General Cheque Account	71,283.39
NAB Term Deposit 9249	15,000.00
NAB Investment Acc 769	218,492.76
NAB Investment Acc 8394	50,000.00
NAB Investment Acc 1628	100,000.00
Artback NT Roco Fund 0348	1,698.00
NAB Investment Acc 7952	200,000.00
Load and Go Prepaid Card 1	5.05
Load and Go Prepaid Card 2	61.60

Other cash items:

Petty Cash - Darwin	148.75
Petty Cash - Alice Springs	87.45
	656,777.00

Note 3: Receivables

Current

Trade debtors	4,048.00
	4,048.00

Note 4: Other Assets

Current

Prepayments	5,454.60
Other	568.18
	6,022.78

2014

Note 5: Property, Plant and Equipment

Plant and equipment:

- At cost	31,320.00
- Less: Accumulated depreciation	<u>-23,100.00</u>
	<u>8,220.00</u>

Motor vehicles:

- At cost	20,000.00
- Less: Accumulated depreciation	<u>-8,288.00</u>
	<u>11,712.00</u>
	<u>19,932.00</u>

Note 6: Payables

Unsecured:

- Trade creditors	<u>4,169.90</u>
	<u>4,169.90</u>
	<u>4,169.90</u>

2014

Note 7: Financial Liabilities**Current****Unsecured:**

- Visa Card	<u>4,652.03</u>
	<u>4,652.03</u>

Secured*:

- Business Loan	1,778.54
- Less: Unexpired interest charges	<u>-15.15</u>
	<u>1,763.39</u>
	<u>6,415.42</u>

Non-Current**Secured*:**

- Business Loan	
- Less: Unexpired interest charges	<u></u>
	<u></u>
	<u></u>

*** Total Current and Non-Current Secured Liabilities**

Business Loan	1,778.54
Less: unexpired interest charges	<u>-15.15</u>
	<u>1,763.39</u>

2014

Note 8: Tax Liabilities

Current

GST payable control account	28,258.61
Input tax credit control account	-13,496.93
Amounts withheld from salary and wages	10,466.09
	<u>25,227.77</u>

Note 9: Provisions

Current

Superannuation Payable	14,099.70
Provision for Annual Leave	28,926.65
Provision for LSL	7,799.37
	<u>50,825.72</u>

Note 10: Other Liabilities

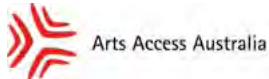
Current

Unexpended Grants	415,591.28
	<u>415,591.28</u>



The following projects have been assisted by the Australian Government through the Australia Council, its arts funding and advisory body.

Highway of Lost Hearts
Djuki Mala
Jacinta Price
Pungku Tjukurpa
Mokuy



ART BACK NT

Cover image: Djuki Mala. Photographer: Sean Young, SYC Studios.